

A-2 Rod End Conversion Kit

Original Configuration

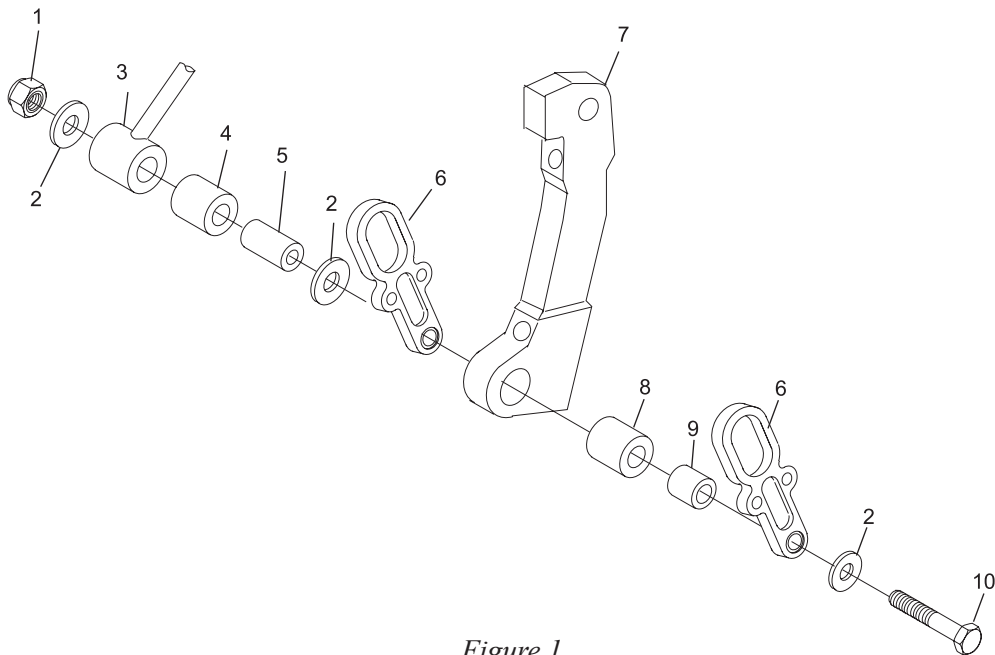


Figure 1

ORIGINAL CONFIGURATION - Figure 1			
PART NO.	INDEX NO.	DESCRIPTION	DISPOSITION
11-121519-001	1	Nylon Cap Locknut	Discard
11-190513-001	2	Plain Washer (3 required)	Discard
12-250059-007	3	Rod End	Discard
11-420093-000	4	Bearing	Discard
12-100185-029	5	Spacer	Discard
12-252346-000	6	Link (3/8" diameter mounting hole) (2 required)	Discard
12-252341-000	7	Cushion Mount	Reuse
10-424001-000	8	Bearing	Reuse
12-100185-030	9	Spacer	Discard
10-002002-001	10	Bolt	Discard

See page 2 for revised configuration.

Revised Configuration

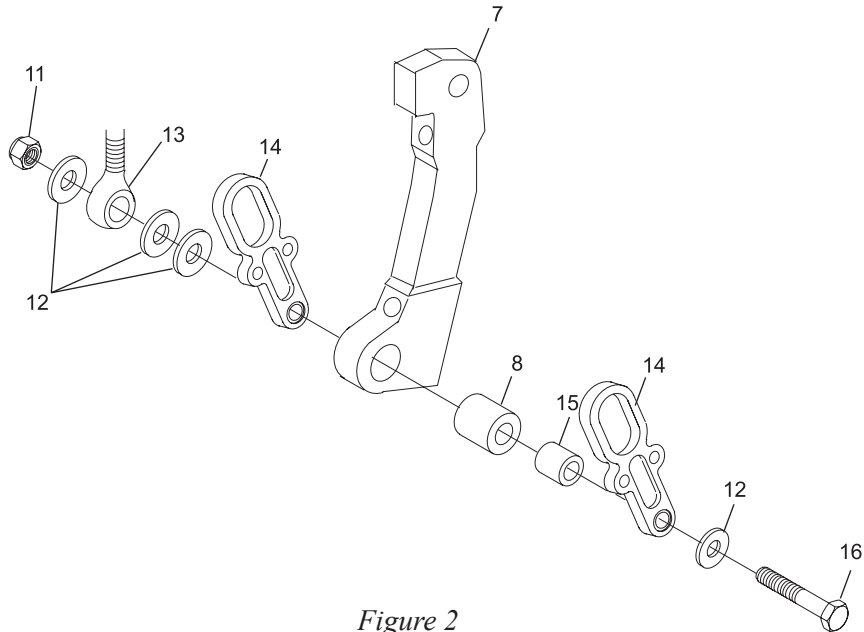


Figure 2

REVISED CONFIGURATION - Figure 2		
PART NO.	INDEX NO.	DESCRIPTION
11-121523-000	11	Nylon Cap Locknut
11-190520-001	12	Plain Washer (4 required)
12-252060-000	13	Rod End (Uniball)
12-252346-000	14	Link (1/2" diameter mounting hole) (2 required)
12-252341-000	7	Cushion Mount
10-424001-000	8	Bearing
12-100185-036	15	Spacer
10-002006-000	16	Bolt