

Short Vertical Support Upgrade

These instructions will provide a step-by-step process of replacing the first existing vertical support with a shorter vertical support.

This process requires partial removal of the first gutter section and replacement of the first vertical support. A new hole will need to be drilled in the gutter for the new short vertical support.

Packaging

Model Number L2-600074-000

1	84-200547-000	Drill Fixture - Short Vertical Support (one per center)
1	84-860733-000	Package - Short Vertical Support, Lane Pair Upgrade
4	84-200544-000	Short Vertical Support
4	84-200458-001	Connecting Pin
1	84-900041-000	Instruction Sheet
1	84-860733-700	Packing List
8	11-537050-000	E-Clip

Optional Items

1	84-200472-000	Brunswick E-Clip Installation Tool
---	---------------	------------------------------------

Partial Removal of Gutter and First Vertical Support

1. Remove the ball return cover and ball return capping.
2. Remove division cover and division capping.
3. Remove header blocks on both gutters.
4. Remove all screws securing the first gutter section from the foul line to the fourth vertical support location. Refer to *Figure 1*.

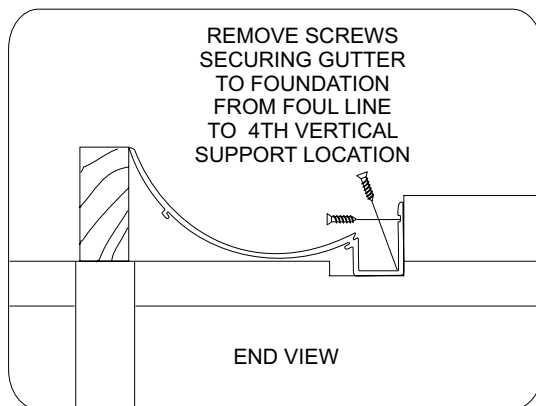


Figure 1

3. Support the front of the gutter section to allow removal of the existing vertical support. Refer to *Figure 2*.

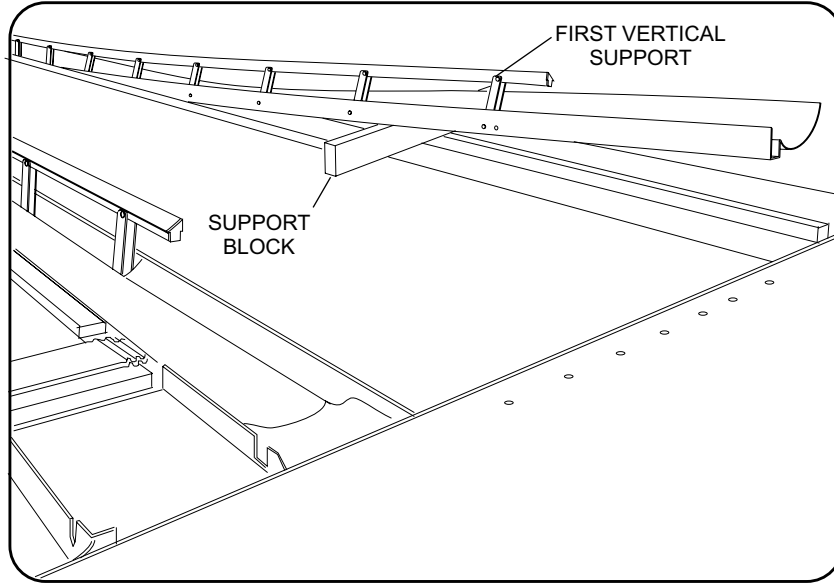


Figure 2

4. Remove pivot pins, E-clips and the first vertical support **ONLY**, from the first section of gutter. Refer to *Figure 3*.



NOTE:

Retain gutter pivot pins and rubber spacers for reuse. The rail pivot pins will need to be replaced with the new pins (P/N 84-200458-001) provided in the package.

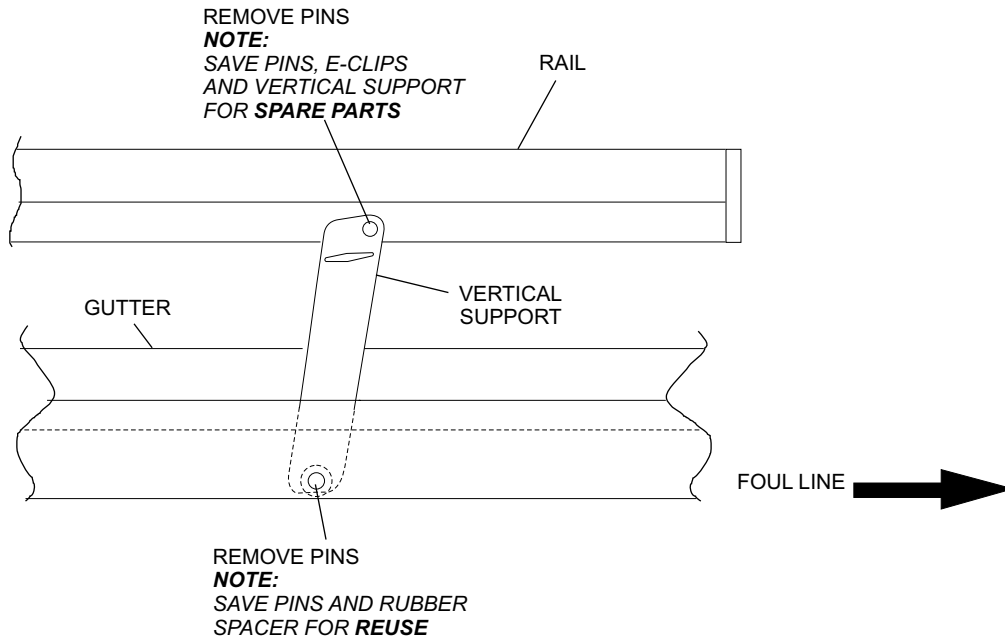


Figure 3

5. Position the drill fixture where the first vertical support was removed, aligning holes as shown in *Figure 4*.

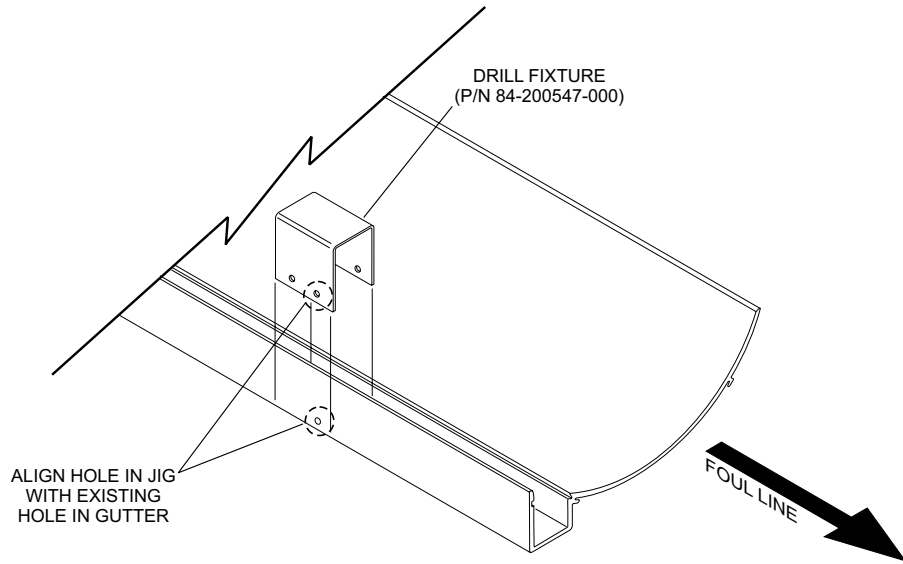


Figure 4

6. Temporarily place a pivot pin through the first hole of the drill fixture and the hole in the gutter to maintain proper position of the drill fixture. Refer to *Figure 5*.

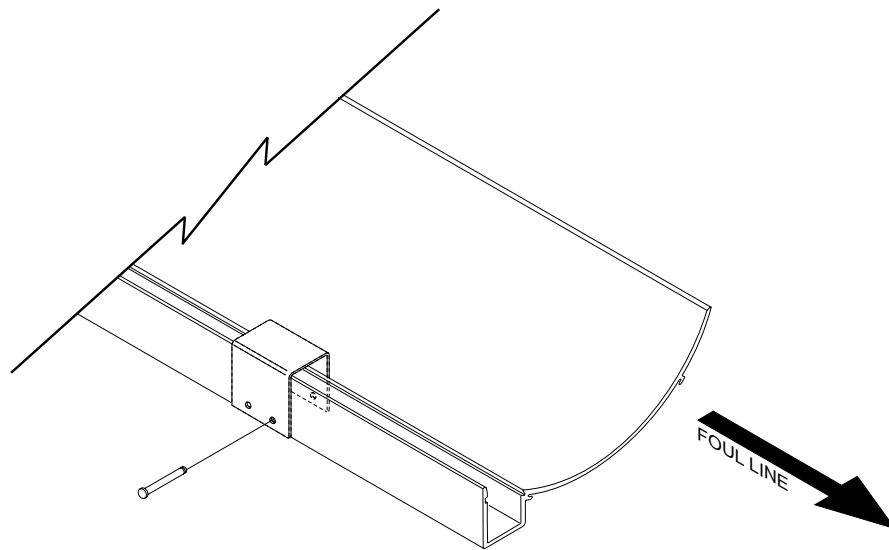


Figure 5

7. Drill a 1/4" (7mm) hole through the gutter using the open hole of the drill fixture. Refer to *Figure 6*.

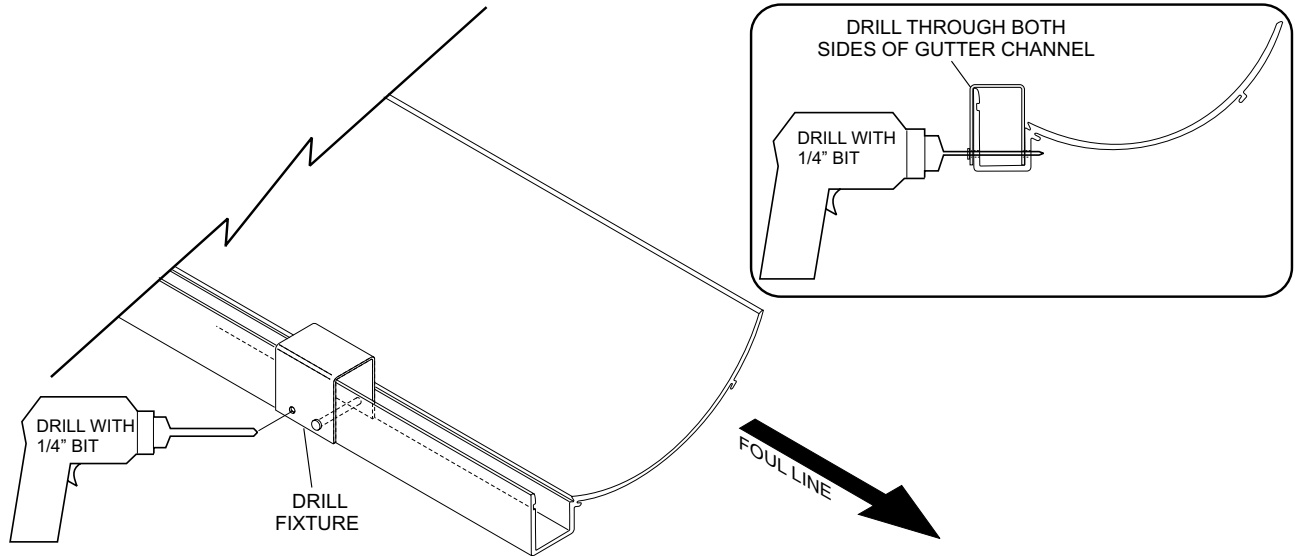


Figure 6

8. Install the new short vertical support (P/N 84-200455-000) to the gutter with existing pivot pin, existing rubber spacer and new E-clips (P/N 11-537050-000). Refer to *Figure 7*.

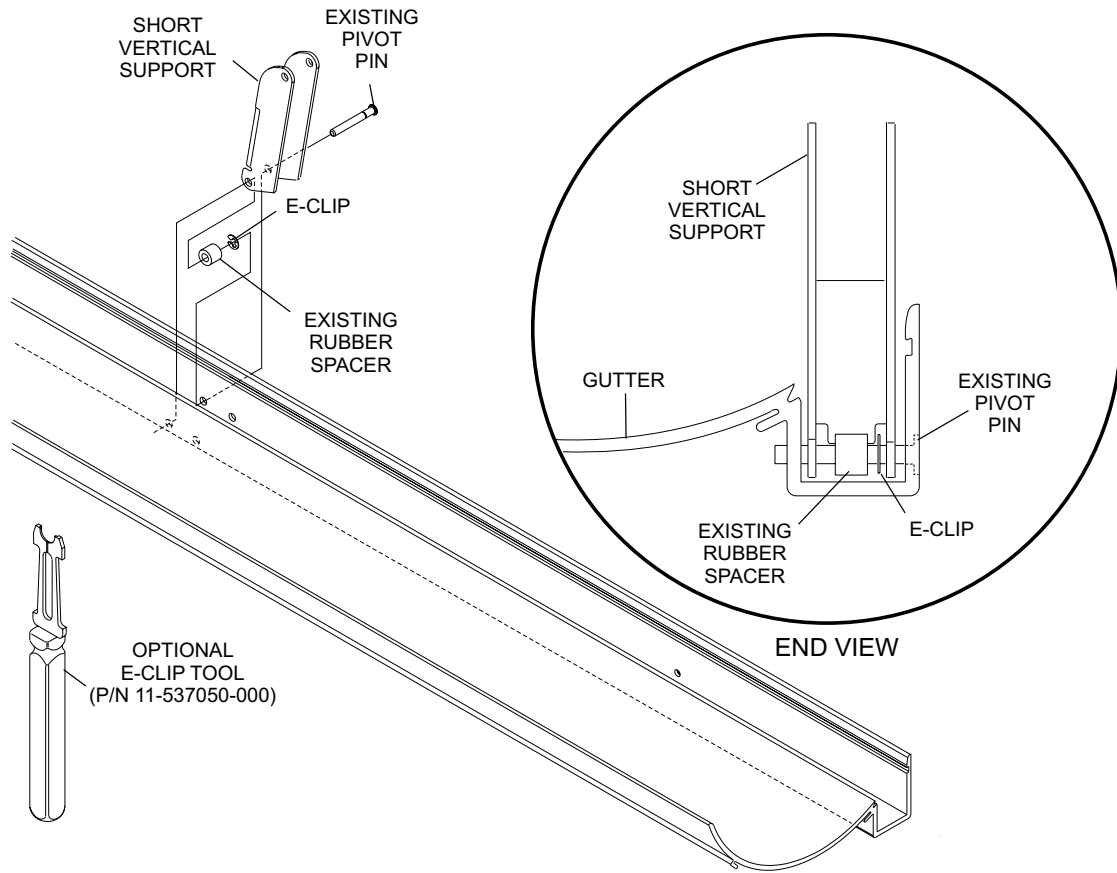


Figure 7

- Secure the new short vertical support to the rail using new pivot pins (P/N 84-200458-001) and E-clips (P/N 11-537050-000). Verify that all E-clips are fully seated in the groove of the pin. Refer to *Figure 8*.

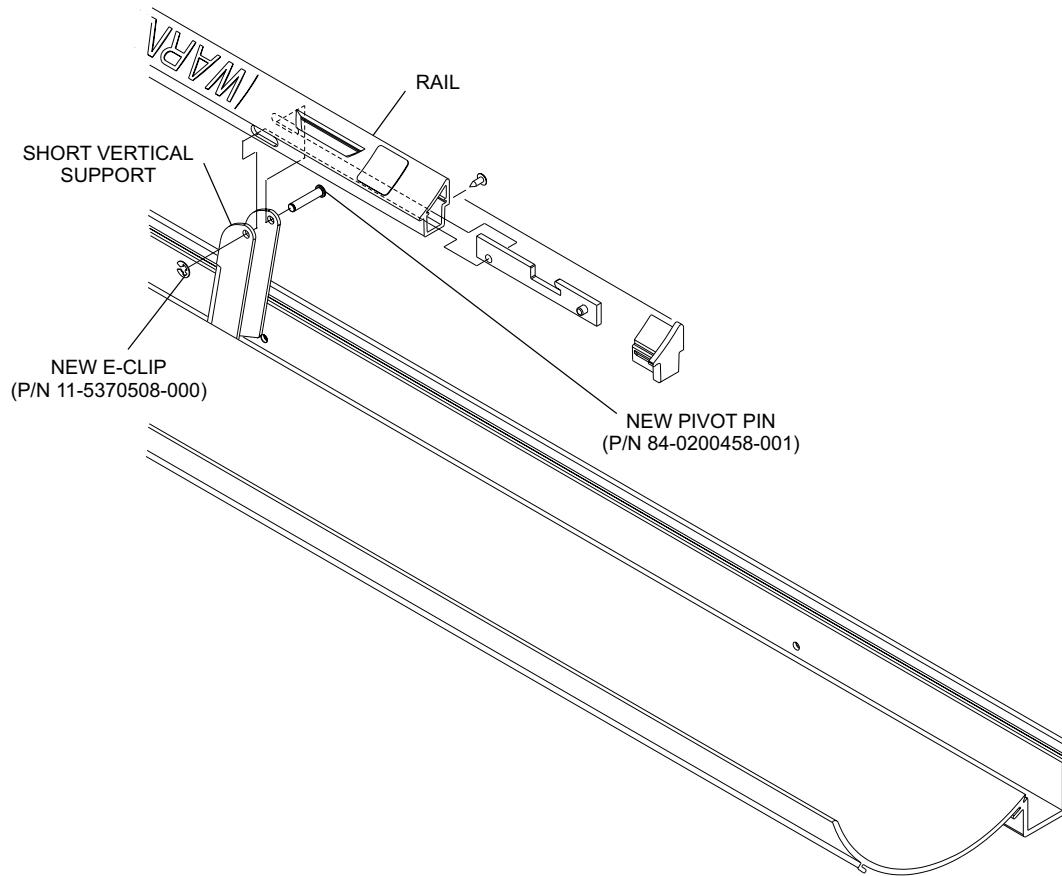


Figure 8

- Reinstall the gutter.
- Reinstall division cover and division capping.
- Reinstall ball return cover and ball return capping.
- Reinstall header blocks on both gutters.
- Test the bumpers by raising and lowering the rails. Check for any binding and repair as necessary.