

Section D

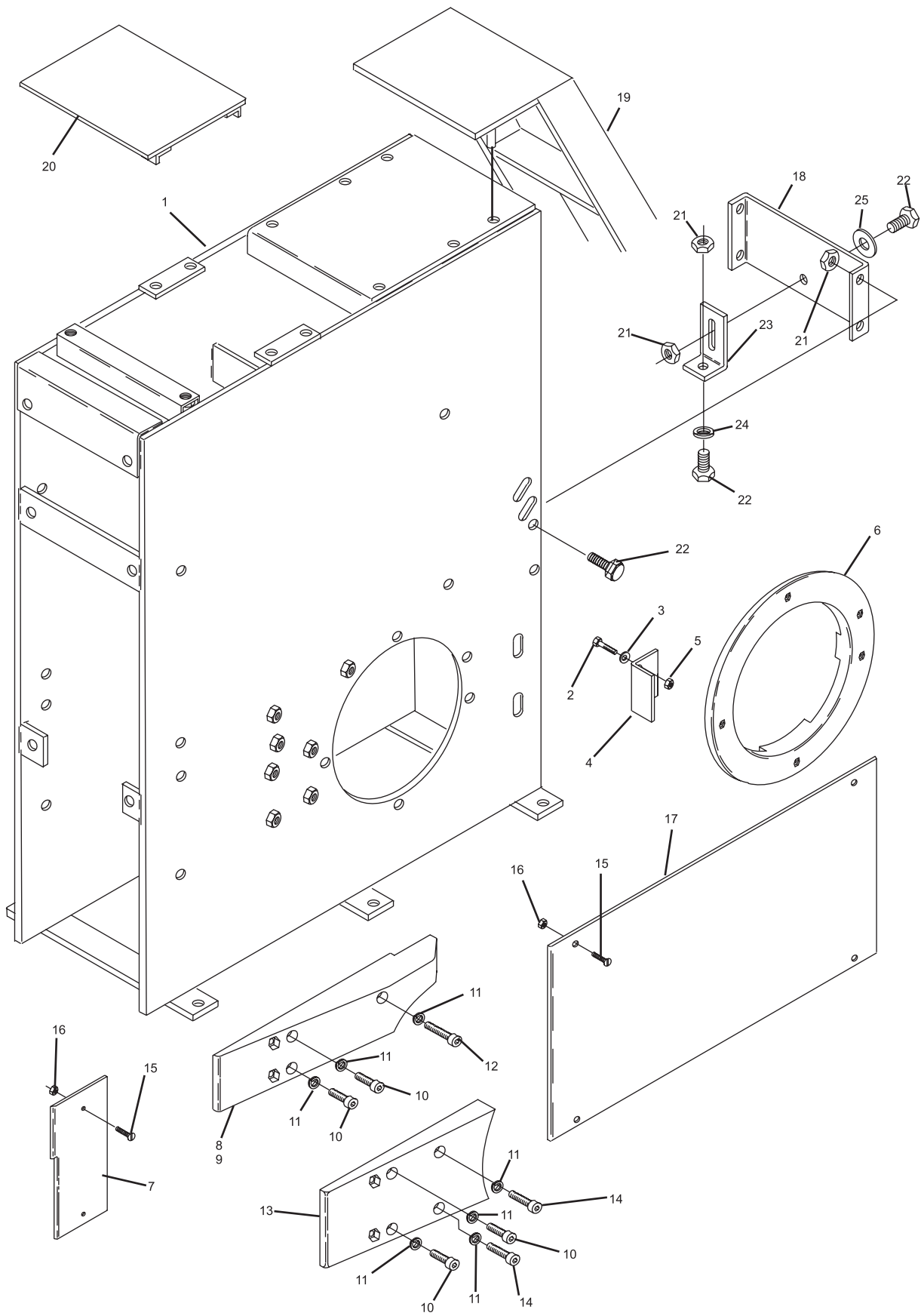
**ACCELERATOR**

**Index**

<b>No.</b>	<b>Part No.</b>	<b>Description</b>
1.	47-021476-001	Ball Accelerator Box
2.	11-051019-001	Hex Hd. Cap Screw (10 mm x 25 mm)
3.	11-052018-001	Flat Washer (10.5 mm)
4.	47-021249-004	Ball Cushion Stop
5.	11-051745-001	Locknut (10 mm)
6.	47-021057-003	Ball Door Protector Ring
7.	47-021481-003	Fiber Plate (small)
8.	47-021619-002	R.H. Protector Wedge
9.	47-021620-002	L.H. Protector Wedge
10.	11-051543-001	Socket Hd. Cap Screw (10 mm x 20 mm)
11.	11-051771-001	Lockwasher (10 mm)
12.	11-051551-001	Socket Hd. Cap Screw (10 mm x 45 mm)
13.	47-021618-002	Protector Wedge (lower)
14.	11-051512-001	Socket Hd. Cap Screw (10 mm x 35 mm)
15.	11-052454-001	Flat Hd. Machine Screw (6 mm x 16 mm)
16.	11-051743-001	Locknut (6 mm)
17.	47-021480-003	N.A. Fiber Plate (large)
18.	47-021478-003	Retaining Plate
19.	47-023950-002	Ladder (short pit)
20.	47-023593-003	Guard Plate
21.	11-051744-001	Locknut (8 mm)
22.	11-051010-001	Hex Hd. Cap Screw (8 mm x 20 mm)
23.	47-031479-004	Retaining Plate Bracket
24.	11-052031-001	Flat Washer (9 mm)
25.	11-052017-001	Washer (8.4 mm)

*N.A. = No Longer Available*

**Accelerator Box Assembly**



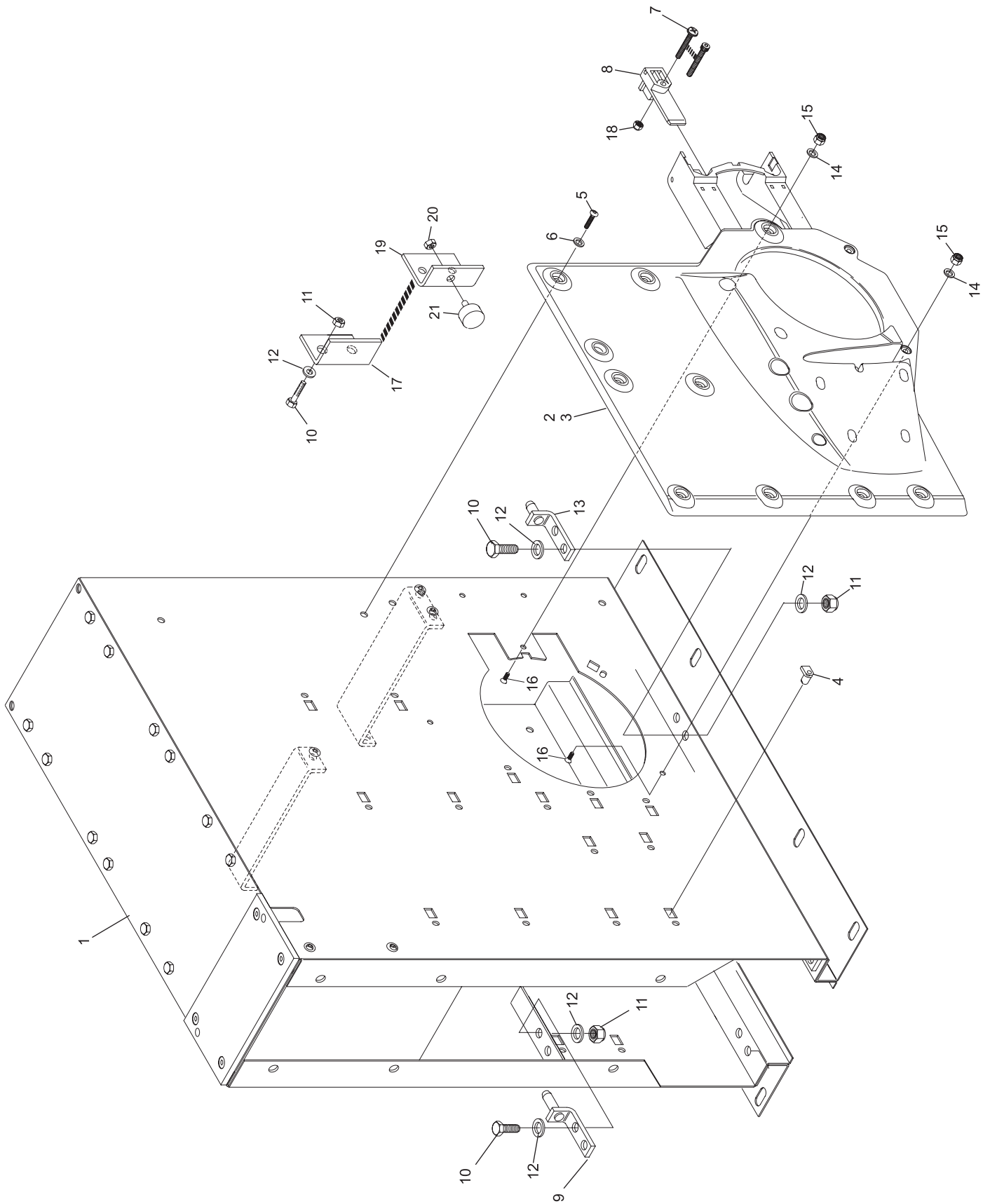
### Accelerator Box Assembly

<b>Index No.</b>	<b>Part No.</b>		<b>Description</b>
1.	47-035305-009	S.O.	Ball Accelerator Box (complete)
2.	47-035240-001		L.H. Ball Door Protector Plate - 10 pin side
3.	47-035241-001		R.H. Ball Door Protector Plate - 7 pin side (shown)
4.	11-055800-000		EJOT Plastic Fastener (Nut Plate)
5.	11-054466-000		EJOT Plastic Fastener Screw (25 mm x 60 mm)
6.	11-052008-001		Flat Washer (6.4 mm)
7.	11-054461-000	N.A.	EJOT Screw (60 mm x 50 mm)
	11-051562-001		Hex Socket Cap Screw (6 mm x 60 mm)
8.	47-035239-004		Axle Wedge
9.	47-035220-003		Front Accelerator Mount Bracket w/Pin
10.	11-051019-001		Hex Hd. Cap Screw (10 mm x 25 mm)
11.	11-051745-001		Locknut (10 mm)
12.	11-052018-001		Flat Washer (10.5 mm)
13.	47-035219-003		Rear Ball Rod Assembly Mount w/Pin
14.	11-052020-001		Flat Washer (5.3 mm)
15.	11-051742-001		Locknut (5 mm)
16.	11-052933-001		Countersunk Screw (5 mm x 12 mm)
17.	47-021249-004		Ball Cushion Stop
18.	11-051743-001		Locknut (6 mm)
19.	47-025751-004		Stop Bracket
20.	11-051744-001		Hex Nut (8 mm)
21.	99-020434-004		Rubber Bumper (30 x 20)

*N.A. = No Longer Available*

*S.O. = Special Order*

## **GS-X/CPO Accelerator Box Assembly**



### GS-X/CPO Accelerator Box Assembly

Index			Index		
No.	Part No.	Description	No.	Part No.	Description
1.	47-031455-001	N.A. Ball Accelerator Frame	30.	11-051028-001	Hex Hd. Cap Screw (6 mm x 25 mm)
	47-275705-009	R.O. Ball Accelerator Frame (208/230V)	31.	11-051702-001	Hex Nut (6 mm)
	*47-275706-009	N.A. Ball Accelerator Pkg. (380V)	32.	47-031603-003	Motor Mounting Bracket
2.	47-031248-004	Tension Spring	33.	11-051769-001	Lockwasher (6 mm)
3.	47-031440-003	Tension Bar	34.	11-051704-001	Hex Nut (8 mm)
4.	11-051703-001	Hex Nut (10 mm)	35.	47-031604-004	Shaft
5.	11-053501-000	Key (5 mm x 5 mm x 25 mm)	36.	11-051805-001	Split Pin (2.5 mm x 20 mm)
6.	47-031454-002	Pivoting Lever	37.	47-031307-004	Angle Bracket
7.	47-031456-004	Axle	38.	11-051743-001	Locknut (6 mm)
8.	11-052926-001	Flat Hd. Cap Screw (10 mm x 20 mm)	39.	99-010123-004	Bushing
9.	11-051045-001	Hex HD. Cap Screw (10 mm x 30 mm)	40.	47-031453-004	Spring Bracket
10.	11-051745-001	Locknut (10 mm)	41.	99-020163-004	Spring
11.	10-635127-000	Flat Belt	42.	**47-033867-004	Motor Drive Pulley
12.	***47-035232-002	Front Driving Drum Complete - Spacers not included	43.	11-053904-000	V-Belt (10 mm x 6 mm x 950 mm, 50Cy, export only)
	*47-035234-004	Spacer - needed when replacing Driving Drum (2 each)		11-053907-000	V-Belt (10 mm x 6 mm x 925 mm) 60Cy - domestic only)
13.	47-035064-099	Rear Driving Drum Complete - spacers not included	44.	11-052804-001	Set Screw (16 mm x 8 mm)
	*47-035234-004	Spacer - needed when replacing Driving Drum (2 each)	45.	11-051018-001	Hex Hd. Cap Screw (6 mm x 20 mm)
14.	11-051015-001	Hex Hd. Cap Screw (8 mm x 25 mm)	46.	11-052048-001	Flat Washer (6.4 mm)
15.	11-052028-001	Flat Washer (10.5 mm)	47.	99-040113-002	Ball
16.	11-052017-001	Flat Washer (8.4 mm)		99-040295-004	Accelerator Motor (1/2 H.P., 230VAC/380VAC)
17.	11-051744-001	Locknut (8 mm)			Ball Accelerator Motor (1/2 H.P., 208VAC)
18.	11-052017-001	Flat Washer (8.4 mm)	48.	47-032500-004	Ball Stop (for welded configuration)
19.	47-862787-000	Protective Cover (Pkg. of 4)	49.	47-032125-003	Guard Bracket
20.	11-052609-001	N.A. Carriage Bolt (8 mm x 100 mm)	50.	47-032126-003	Ball Stop
	47-861021-001	R.O. Carriage Bolt (8 mm x 100 mm) Pkg. of 5	51.	47-033504-004	Flat Belt Guard Complete
21.	11-680925-000	N.A. Strain Relief	52.	11-052610-001	Carriage Belt (6 mm x 20 mm)
22.	68-100192-000	N.A. Cable Assembly	53.	11-051770-001	Lockwasher (8 mm)
	*47-142614-000	Cable Assembly (GS Consolidated Electronics)	54.	47-022519-000	N.A. Ball Wipe w/Sleeve
23.	47-031309-001	Ball Rod		47-022519-002	N.A. Sleeve only
24.	53-520634-001	Transition Track (GS Accelerators to Return Track)			
25.	11-051045-001	Hex Hd. Cap Screw (10 mm x 30 mm)			
26.	11-051771-001	Lockwasher (10 mm)			
27.	11-052018-001	Flat Washer (10.5 mm)			
28.	47-031261-004	Spacer			
29.	11-053577-000	Rubber Bumper (6 mm Thread)			

N.A. = No Longer Available

\* Not Illustrated

\*\* Replaces 47-031306-004 Motor Drive Pulley

\*\*\* Replaces 47-035063-009 Front Drive Drum

## Ball Accelerator



**Index**

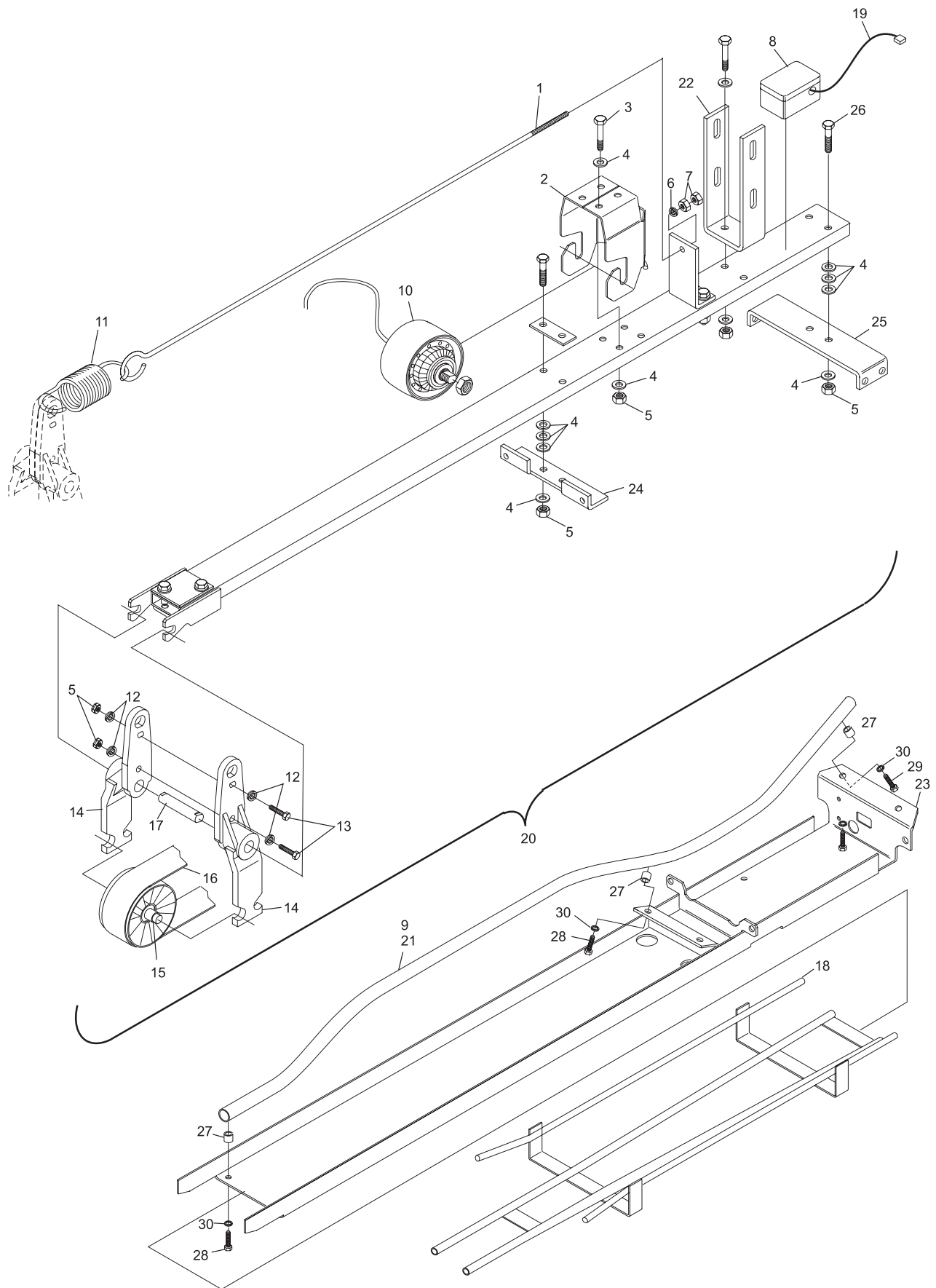
<b>No.</b>	<b>Part No.</b>		<b>Description</b>
1.	47-035236-003		Tension Rod
2.	47-035226-002		Motor Support Bracket
3.	11-051071-000		Hex Head Cap Screw (10 mm x 60 mm)
4.	11-052050-001		Flat Washer (10.5)
5.	11-051745-001		Locknut (10 mm)
6.	11-052019-001		Flat Washer (8.4)
7.	11-051704-001		Nut (8 mm)
8.	47-035600-004		Terminal Box w/Cable
9.	47-862787-000		Protective Cover - Pkg. of 4
10.	99-030363-004		Accelerator Motor/Rear Drive Drum Assembly w/Cable (208/230/380 VAC)
11.	47-031248-004		Tension Spring
12.	11-052018-001		Flat Washer (10.5 mm)
13.	11-051020-001	N.A.	Hex Head Screw (M8 x 150 mm)
14.	47-031454-002		Pivot Lever
15.	47-035232-002		Front Driving Drum Complete - spacers not included
	*47-035234-004		Spacer - needed when replacing Driving Drum Complete (2 each)
16.	10-635127-000		Flat Belt
17.	47-035230-004		Axle
18.	53-520634-001		Metric Transition Track (GS Accelerators to Return Track)
19.	47-035600-004		Terminal Box
20.	47-035601-001		Drive Frame Complete
21.	47-035303-009	S.O.	Ball Rod w/Cover
22.	47-035225-003		Bracket (locking mechanism)
23.	47-035211-001		Bottom Accelerator Plate
24.	47-035229-002		Front Bracket
25.	47-035228-003		Rear Bracket
26.	11-051093-001		Mounting Screw (10 mm x 75 mm)
27.	47-035214-004	N.A.	Spacer
28.	11-051045-001		Hex Hd. Cap Screw (10 mm x 30 mm)
29.	11-051078-001	N.A.	Hex Hd. Cap Screw (10 mm x 40 mm)
30.	11-051771-001		Lockwasher (10 mm)

*N.A. = No Longer Available*

*S.O. = Special Order*

*\* = Not Illustrated*

## GS-X/CPO Ball Accelerator



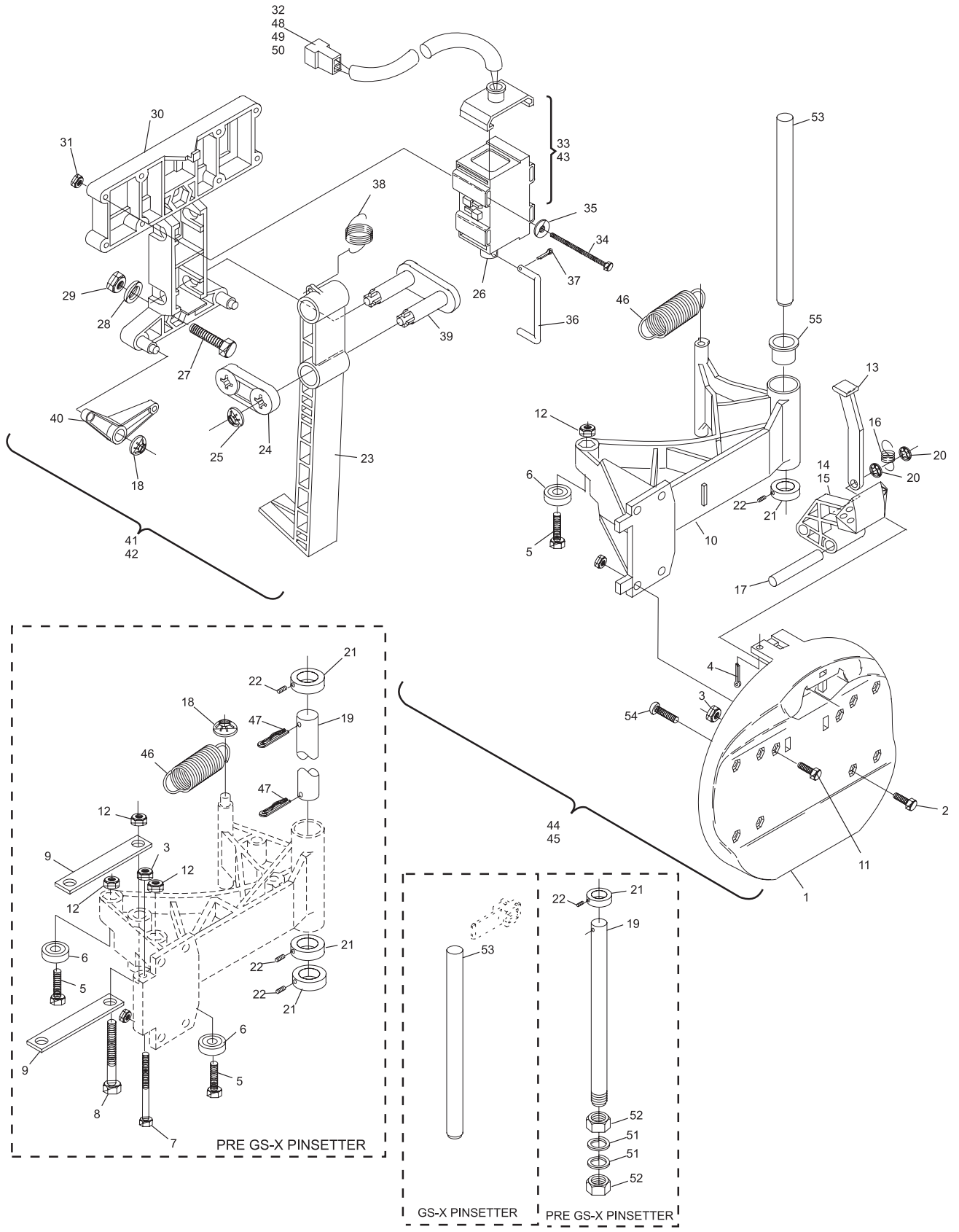
**GS-X/CPO Ball Accelerator**

Index			Index		
No.	Part No.	Description	No.	Part No.	Description
1.	*47-031054-002	Ball Door	36.	47-031801-004	Connecting Link
2.	11-051018-001	Hex Hd. Cap Screw (6 mm x 20 mm)	37.	11-051791-001	Split Pin (1.6 mm x 10 mm)
3.	11-051743-001	Locknut (6 mm)	38.	47-031799-004	Tension Spring
4.	11-051793-001	Cotter Pin (2 mm x 16 mm)	39.	47-031798-004	Connecting Stud
5.	11-051067-001	Hex Hd. Cap Screw (8 mm x 35 mm)	40.	47-031802-004	Lever
6.	11-430046-000	Bearing	41.	47-033558-009	R.H. Locking Mechanism Complete
7.	11-051060-001	Hex Hd. Cap Screw (6 mm x 70 mm)	42.	***47-033557-009	L.H. Locking Mechanism
8.	11-051061-001	Hex Hd. Cap Screw (8 mm x 75 mm)	43.	**47-243030-004	N.A. Solenoid Assembly Complete (silver box, consolidated box, and nexgen electronics)
9.	47-031090-004	Support Brace		99-070356-004	R.O. Solenoid Assembly
10.	*47-031058-001	Arm - all GS pinsetters - see note	44.	47-033556-009	R.H. Ball Door with Arm Complete
11.	11-051008-001	Hex Hd. Cap Screw (6 mm x 10 mm)	45.	47-033555-009	L.H. Ball Door with Arm Complete
12.	11-051744-001	Locknut (8 mm)	46.	47-030276-004	Ball Door Arm Tension Spring
13.	47-031822-004	Lever	47.	11-054301-001	N.A. Hitch Pin (3 mm x 62 mm)
14.	47-031056-003	L.H. Ball Door Key		47-861032-001	R.O. Hitch Pin (3 mm x 62 mm) Pkg. of 10
15.	47-031055-003	R.H. Ball Door Key	48.	11-680302-000	Terminal - Male
16.	47-034767-004	Tension Spring	49.	11-680301-000	Terminal - Female
17.	47-031091-004	Shaft	50.	11-680216-000	Connector - Female
18.	11-053478-001	Speed Nut (8 mm)	51.	11-055253-001	Special Lockwasher (6 mm)
19.	47-031302-004	Ball Door Shaft (Pre GS-X Pinsetters)	52.	11-053157-001	Jam Nut (14 mm)
	47-034843-004	Shaft - Threaded End	53.	47-035238-004	Ball Door Shaft (GS-X Pinsetters)
20.	11-053477-001	Speed Nut (7 mm)	54.	11-054463-000	N.A. EJOT Self Tapping Screw (KB30 x 7 mm)
21.	11-053616-001	Stop Collar (15 mm)	55.	47-034842-004	Bushings
22.	11-052807-001	Set Screw (6 mm x 12 mm)			
23.	47-031797-002	Locking Bolt			
24.	47-031800-004	Pivot Link			
25.	11-053480-001	Speed Nut (10 mm)			
26.	99-060133-004	Plunger Only			
27.	11-051021-001	Hex Hd. Cap Screw (10 mm x 35 mm)			
28.	11-052028-001	Flat Washer (10.5 mm)			
29.	11-051745-001	Locknut (10 mm)			
30.	47-031796-002	Holder			
31.	11-051742-001	Locknut (5 mm)			
32.	11-680116-000	Connector - Male			
33.	**99-060219-004	Solenoid Assembly Complete (red box)			
34.	11-051068-001	Hex Hd. Cap Screw (5 mm x 65 mm)			
35.	11-052039-001	Flat Washer (5.3 mm)			

N.A. = No Longer Available  
R.O. = Replacement Option

\* Index Nos. 1 and 10 are inverted for use in both left-hand and right-hand machines.  
\*\* Does not include Plunger, 99-060133-004  
\*\*\* For older ball door arms with steel support braces (series 169, to series 419) change these arms on both ball doors of a pair.

## Ball Door/Lock Assembly



### Ball Door/Lock Assembly

*Intentionally Blank Page*