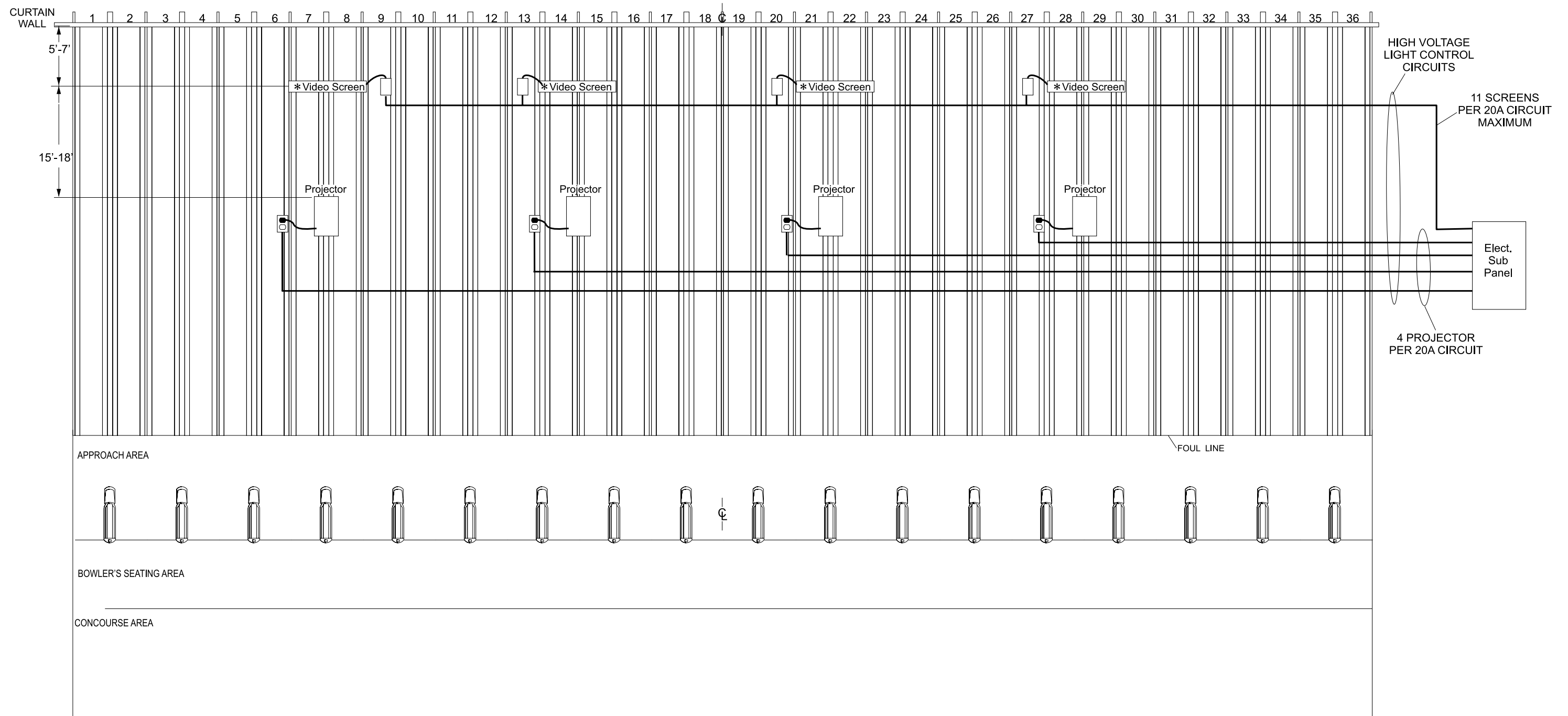


# Brunswick Interactive Games Layout for 25-36 lanes

## Standard Projectors



### CONTROL SYSTEM NOTES

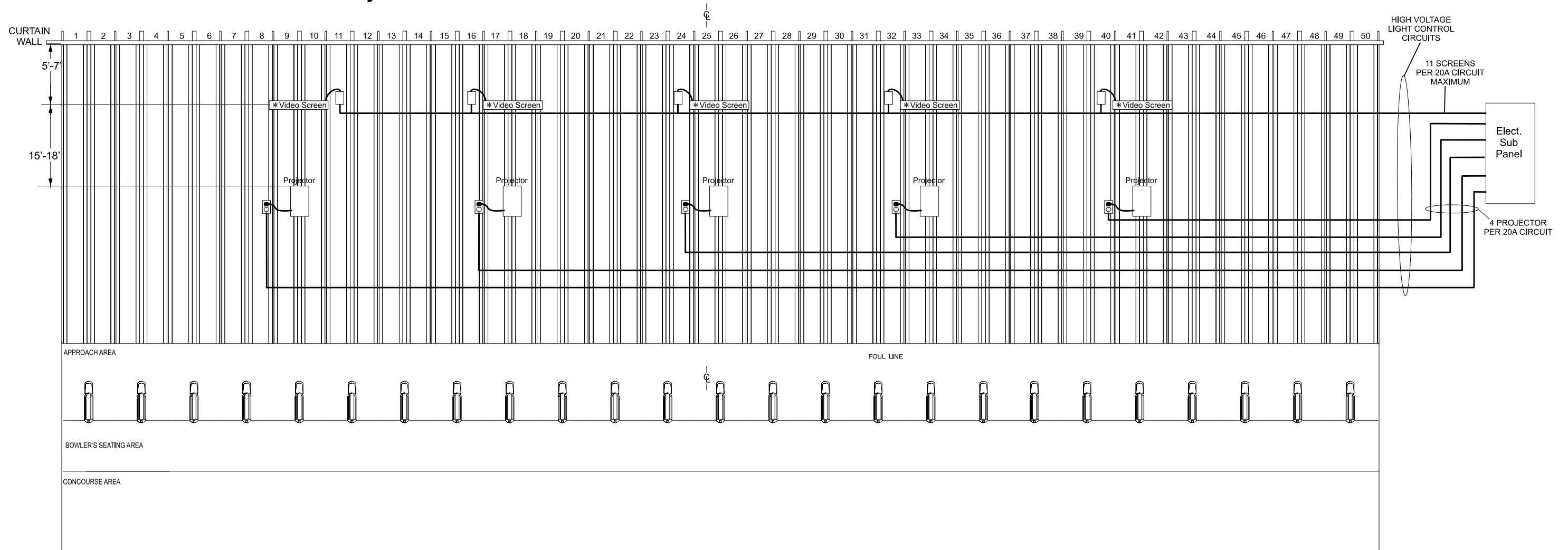
1. Placement of screens is approximate and subject to personnel preference. Ceiling heights greater than 14 feet may require additional lighting fixtures or different placement of fixtures.
2. Electrical service should be provided in the form of a non-I.G. duplex receptacle above the ceiling near each projector.

Screen Electrical Information							
Volts	Hertz	AC/DC	Phase Per Unit	Amps	Watts	Branch Circuit	Customer Response
115-130 200-230	50/60	AC	1	1.1	132	2 Wires + Ground	Install proper receptacle per local electrical code

Standard Projector Electrical Information							
Volts	Hertz	AC/DC	Phase Per Unit	Amps	Watts	Branch Circuit	Customer Response
115-130 200-230	50/60	AC	1	3.0	360	2 Wires + Ground	Install proper receptacle per local electrical code

# Brunswick Interactive Games Layout for 37-50 lanes

## Standard Projectors



### CONTROL SYSTEM NOTES

1. Placement of screens is approximate and subject to personnel preference. Ceiling heights greater than 14 feet may require additional lighting fixtures or different placement of fixtures.
2. Please see Power Distribution reference sheet for power requirements. Electrical service should be provided in the form of a non-I.G. duplex receptacle above the ceiling near each projector.

Screen Electrical Information							
Volts	Hertz	AC/DC	Phase Per Unit	Amps	Watts	Branch Circuit	Customer Response
115-130 200-230	50/60	AC	1	1.1	132	2 Wires + Ground	Install proper receptacle per local electrical code

Standard Projector Electrical Information							
Volts	Hertz	AC/DC	Phase Per Unit	Amps	Watts	Branch Circuit	Customer Response
115-130 200-230	50/60	AC	1	3.0	360	2 Wires + Ground	Install proper receptacle per local electrical code